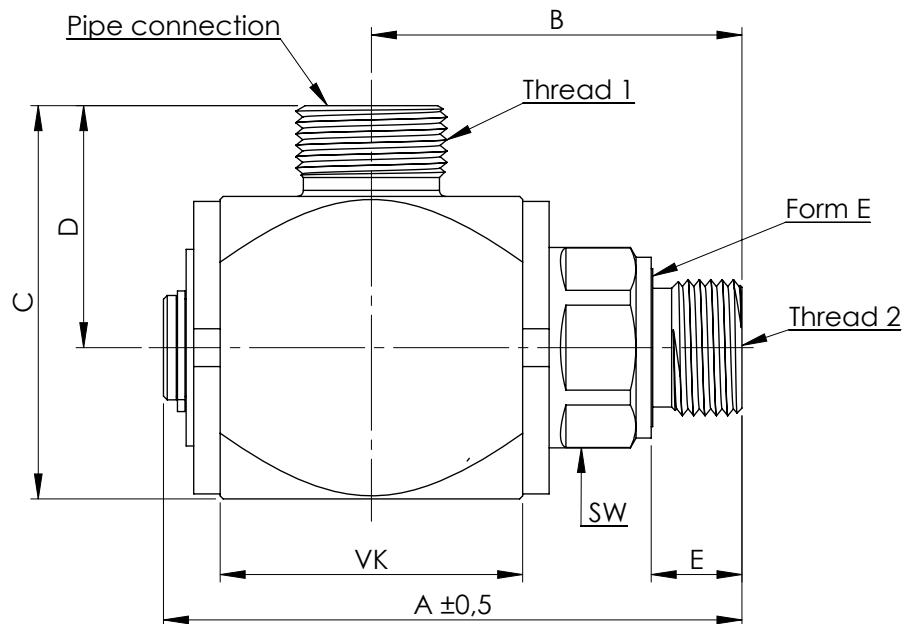


## Angle swivel joint CNL



block & threaded socket steel surface. Zn - Ni  
 Axle steel surface chem. Nickel  
 Threaded bush with IGUS - plain JSM  
 Seal:  
 - dynamic WDI PTFE with O.Ring NBR  
 - static O.Ring NBR & Teflon support ring  
 Shaft seal against external influences

### Operating conditions:

Medium: Hydraulic oil & water

(Dirt particles size up to max. 25 $\mu$ )

Working pressure: min. 10bar up to max. 400bar

Temperature: Hydraulic oil from -30°C to +95°C

Water from 0°C to +80°C

Suitable for rotary and oscillating movements to a sliding speed maximum 0,05m/sec., (but not constant)  
 (Rotary speed is dependent on the shaft diameter)

	A	B	C	D	VK	SW	Thread 1	Thread 2
GK 5651/20	76,5	49,0	52,0	32,0	40	24	M18 x 1,5	M18 x 1,5
GK 5652/20	76,5	49,0	52,0	32,0	40	24	M20 x 1,5	M18 x 1,5
GK 5653/20	76,5	49,0	52,0	32,0	40	24	M22 x 1,5	M18 x 1,5
GK 5654/20	76,5	49,0	52,0	32,0	40	27	M22 x 1,5	M22 x 1,5
GK 5655/20	76,5	49,0	54,0	34,0	40	27	M24 x 1,5	M22 x 1,5
GK 5656/20	76,5	49,0	52,0	32,0	40	27	M26 x 1,5	M22 x 1,5
GK 5657/20	97,5	63,0	61,0	38,5	45	32	M30 x 2,0	M27 x 2,0

Issue: 07/2014

Technical changes are reserved to us.