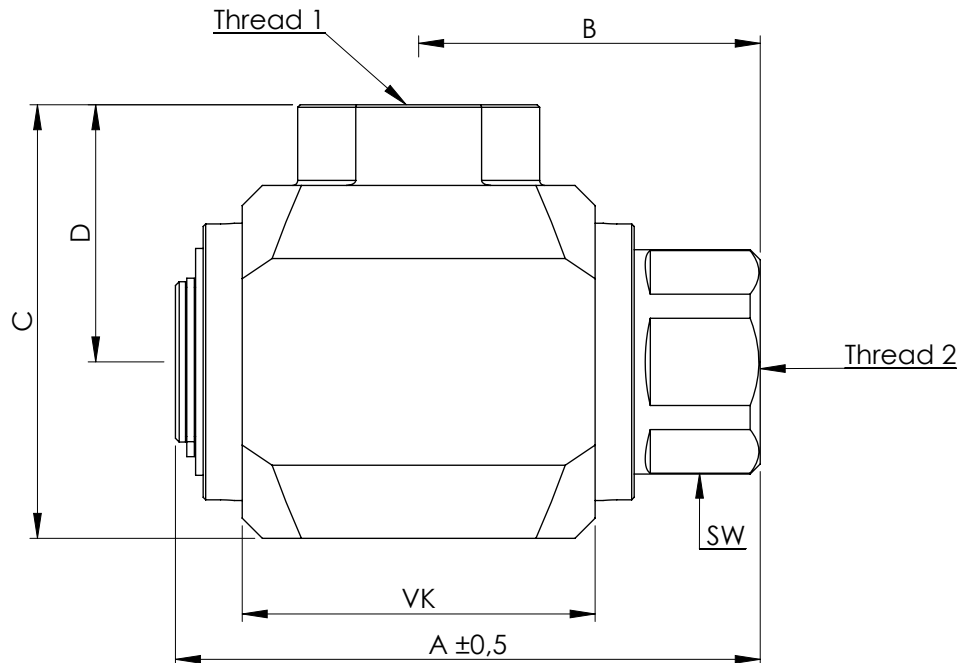


Angle swivle joint



block steel surface. Zn - Ni
Axle steel surface chem. Ni.
Thread bush brass
Seal:
- dynamic Variseal Turcon 40
- static O.Ring NBR
Nutring against external influences

Operating conditins:
Medium: Hydraulic & water
(Dirt particles size up to max. 25µ)
Working pressure: min 10bar bis max. 400bar
Temperatur: Hydraulic oil from -30°C to +95°C
Water from 0°C to +80°C
Suitable for rotary and oscillating movements

	A	B	C	D	VK	SW	Thread 1	Thread 2	max. speed
GK 2142/10	70,0	43,0	53,0	33,0	40	24	IG 1/4"	IG 1/4"	60U/min
GK 2147/10	70,0	43,0	53,0	33,0	40	24	IG 3/8"	IG 3/8"	60U/min
GK 2152/10	70,0	43,0	53,0	33,0	40	27	IG 1/2"	IG 1/2"	60U/min
GK 2157/10	91,5	57,0	65,0	40,0	50	32	IG 5/8"	IG 5/8"	45U/min
GK 2162/10	91,5	57,0	65,0	40,0	50	32	IG 3/4"	IG 3/4"	45U/min
GK 2167/10	116,0	68,0	86,0	51,0	70	41	IG 1"	IG 1"	25U/min
GK 2172/10	132,0	78,0	100,0	60,0	80	55	IG 1 1/4"	IG 1 1/4"	15U/min
GK 2177/10	132,0	78,0	100,0	60,0	80	55	IG 1 1/2"	IG 1 1/2"	15U/min
GK 2182/10	137,0	83,0	107,0	67,0	80	70	IG 2"	IG 2"	15U/min

Issue: 08/2015
Technical changes are reserved to us.