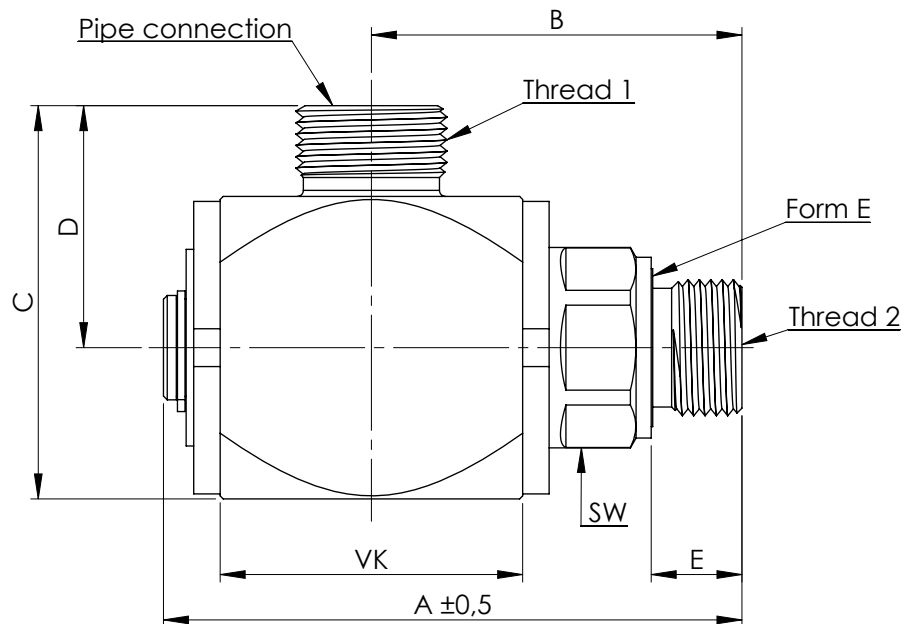


Angle swivel joint CNL



block & threaded socket steel surface. Zn - Ni
 Axle steel surface Zn - Ni
 Threaded bush with IGUS - plain GSM
 Seal:
 - dynamic Nutring NBR
 - static O.Ring NBR & Teflon support ring
 Shaft seal against external influences

Operating conditions:

Medium: Hydraulic oil
 (Dirt particles size up to max. 25µ)
 Working pressure: min. 10bar up to max. 300bar
 Temperature: from -30°C to +95°C
 Suitable for rotary and oscillating movements to a sliding speed maximum 0,05m/sec., (but not constant)
 (Rotary speed is dependent on the shaft diameter)

| | A | B | C | D | VK | SW | Thread 1 | Thread 2 |
|------------|------|------|------|------|----|----|-----------|-----------|
| GK 5651/00 | 76,5 | 49,0 | 52,0 | 32,0 | 40 | 24 | M18 x 1,5 | M18 x 1,5 |
| GK 5653/00 | 76,5 | 49,0 | 52,0 | 32,0 | 40 | 24 | M22 x 1,5 | M18 x 1,5 |
| GK 5654/00 | 76,5 | 49,0 | 52,0 | 32,0 | 40 | 27 | M22 x 1,5 | M22 x 1,5 |
| GK 5655/00 | 76,5 | 49,0 | 54,0 | 34,0 | 40 | 27 | M24 x 1,5 | M22 x 1,5 |
| GK 5656/00 | 76,5 | 49,0 | 52,0 | 32,0 | 40 | 27 | M26 x 1,5 | M22 x 1,5 |
| GK 5652/00 | 76,5 | 49,0 | 52,0 | 32,0 | 40 | 24 | M20 x 1,5 | M18 x 1,5 |
| GK 5657/00 | 97,5 | 63,0 | 61,0 | 38,5 | 45 | 32 | M30 x 2,0 | M27 x 2,0 |

Issue: 10/2015
 Technical changes are reserved to us.